

LSUS NOTES

Praying for You!

Please pray for these students/staff:

Samuel	Ivan
Jariah	Cataleya
Angela	Kendall
King	Emmyha
Pla	Mrs. Fink's mom (Back surgery)
Aaleyah	



LSUS NOTES

Praying for You!

Please pray for these students/staff:

Samuel	Ivan
Jariah	Cataleya
Angela	Kendall
King	Emmyha
Pla	Mrs. Fink's mom (Back surgery)
Aaleyah	



Scholastic Book Fair Success

The recent Scholastic Book Fair at LSUS was a resounding success, bringing in an impressive \$1,500 in Scholastic credits to help expand the school library's collection. Thanks to enthusiastic student participation, the event not only encouraged a love of reading but also provided new books for everyone to enjoy.

Among the top-selling titles were student favorites across various categories. Diaries remained a popular choice, while graphic novels such as *Pocket Peaches* and *Dog Man: Big Jim Begins* flew off the shelves. Easy readers like *Elephant & Piggie: Are You Ready to Play Outside?* and *Bluey: Swim School* were also in high demand, catering to younger book lovers. The chapter book, *Changing Tunes (Love Puppies #5)* emerged as a top pick as well.

With the funds raised, the LSUS library will be able to acquire even more books, ensuring students continue to have access to engaging and inspiring reads. The success of the book fair highlights the strong reading culture at LSUS.

Thank you to everyone who participated and supported the fair—your love of books is making a lasting impact!

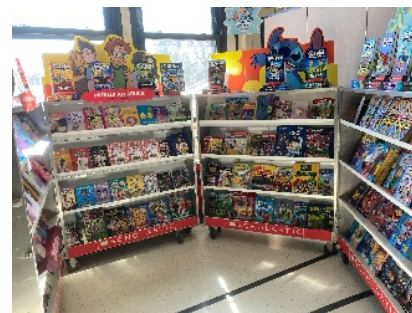
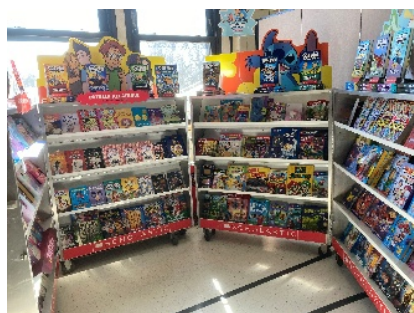
Scholastic Book Fair Success

The recent Scholastic Book Fair at LSUS was a resounding success, bringing in an impressive \$1,500 in Scholastic credits to help expand the school library's collection. Thanks to enthusiastic student participation, the event not only encouraged a love of reading but also provided new books for everyone to enjoy.

Among the top-selling titles were student favorites across various categories. Diaries remained a popular choice, while graphic novels such as *Pocket Peaches* and *Dog Man: Big Jim Begins* flew off the shelves. Easy readers like *Elephant & Piggie: Are You Ready to Play Outside?* and *Bluey: Swim School* were also in high demand, catering to younger book lovers. The chapter book, *Changing Tunes (Love Puppies #5)* emerged as a top pick as well.

With the funds raised, the LSUS library will be able to acquire even more books, ensuring students continue to have access to engaging and inspiring reads. The success of the book fair highlights the strong reading culture at LSUS.

Thank you to everyone who participated and supported the fair—your love of books is making a lasting impact!



Encouragement Found in Scriptures:

I can do all things through him who strengthens me.

-Philippians 4:1

Encouragement Found in Scriptures:

I can do all things through him who strengthens me.

-Philippians 4:1



Phil's Friends Care Packages

Phil's Friends is an organization that supports adults with cancer. Our chapel offerings will be supporting this organization this month.

Items to be collected:

- lip balm/chapstick
- fuzzy socks-women's only
- 5 oz. bottles of fragrance-free lotion
- decks of playing cards
- tissue packs
- puzzle books (crosswords, sudoku, etc.)
- single toothbrushes and 5 oz. toothpaste
- journals (5x7) - not spiral bound

Collection will run from now through May 16.




Phil's Friends Care Packages

Phil's Friends is an organization that supports adults with cancer. Our chapel offerings will be supporting this organization this month.

Items to be collected:

- lip balm/chapstick
- fuzzy socks-women's only
- 5 oz. bottles of fragrance-free lotion
- decks of playing cards
- tissue packs
- puzzle books (crosswords, sudoku, etc.)
- single toothbrushes and 5 oz. toothpaste
- journals (5x7) - not spiral bound

Collection will run from now through May 16.



OPEN ENROLLMENT


2025- 2026

DO YOU KNOW SOMEONE WHO IS LOOKING FOR A GREAT SCHOOL?

LUTHERAN SOUTH UNITY SCHOOL WOULD LOVE TO SHARE OUR CHRIST-CENTERED SCHOOL WITH YOU.

TOURS ARE AVAILABLE SO WE CAN SHARE HOW OUR SCHOOL CAN BENEFIT YOUR CHILD.

CONTACT BARB JOHNSON -- ADMISSIONS
BJOHNSON@LSUSFW.ORG
260-744-0459



RE-ENROLLMENT FOR CURRENT LSUS FAMILIES IS ON FAST DIRECT NOW.



OPEN ENROLLMENT

2025- 2026

DO YOU KNOW SOMEONE WHO IS LOOKING FOR A GREAT SCHOOL?

LUTHERAN SOUTH UNITY SCHOOL WOULD LOVE TO SHARE OUR CHRIST-CENTERED SCHOOL WITH YOU.

TOURS ARE AVAILABLE SO WE CAN SHARE HOW OUR SCHOOL CAN BENEFIT YOUR CHILD.

CONTACT BARB JOHNSON -- ADMISSIONS
BJOHNSON@LSUSFW.ORG
260-744-0459



RE-ENROLLMENT FOR CURRENT LSUS FAMILIES IS ON FAST DIRECT NOW.